

E: estrusore/extruder/extrudeuse
VP: vite pistone/screw - piston/vis piston

PORTASTAMPO / MOULD-HOLDER / PORTE-MOULE

PORTASTAMPI MOULD-HOLDERS PORTE-MOULES	N°		2
FORZA CHIUSURA STAMPO MOULD CLAMPING FORCE FORCE DE FERMETEURE DU MOULE	KN		1500
LUCE MASSIMA TRA I PIANI MAX DAYLIGHT OVERTURE MAX ENTRE LES PLAQUES	mm		490
PASSAGGIO FRONTALE TRA LE COLONNE FRONT PASSAGE BETWEEN COLUMN PASSAGE FRONTAL ENTRE LES COLONNES	mm		530
DIMENSIONI STAMPO MOULD DIMENSIONS DIMENSIONS DU MOULE	mm	max	485x550
ALTEZZA MAX STAMPO MAX MOULD HEIGHT HAUTEUR MAX DU MOULE	mm		120/200
ALTEZZA DI INIEZIONE : REGOLABILE INJECTION HEIGHT: ADJUSTABLE HAUTEUR D' INJECTION: REGLABLE	mm		32±90

INIETTORE / INJECTION UNIT / INJECTEUR

E VP

NUMERO INIETTORI NUMBER OF INJECTOR UNITS NOMBRE DES INJECTEURS	N°		4	4
DIAMETRO DELLA VITE SCREW DIAMETER DIAMETRE DE LA VIS	mm		66	65
RAPPORTO L/D VITE SCREW L/D RATIO RAPPORT L/D DE LA VIS	----		14	15,3
CAPACITA' DI PLASTIFICAZIONE PLASTICIZING CAPACITY CAPACITE DE PLASTIFICATION	Kg/h		45	*
VOLUME DI INIEZIONE INJECTION VOLUME VOLUME D' INJECTION	cm³		750	1000
VELOCITA' DELLA VITE SCREW SPEED VITESSE DE LA VIS	r.p.m. (50Hz)		226	130
COPPIA DELLA VITE SCREW TORQUE COUPLE DE LA VIS	daNm		56	56
ZONE DI RISCALDAMENTO HEATING ZONES ZONES DE CHAUFFAGE	N°		3	3+1

POTENZA INSTALLATA / POWER INSTALLED / PUISSANCE INSTALLEE *

		E	VP
RISCALDAMENTO INIETTORI INJECTIONS UNITS HEATING CHAUFFAGE DES INJECTEURS	KW	14.88	24.5
MOTORI INIETTORI INJECTION MOTORS MOTEURS DU INJECTEUR	KW	44	—
MOTORE CENTRALINA IDRAULICA HYDRAULIC UNIT MOTOR MOTEUR DE L'UNITE HYDRAULIQUE	KW	15	30
ARMADIO ELETTRICO ELECTRIC PANEL PANNEAU ELECTRIQUE	KW	2.5	2.5
POTENZA INSTALLATA TOTALE TOTAL INSTALLED POWER PUISSANCE TOTALE INSTALLEE	KW	76.38	57

CONSUMO MEDIO / CONSUMPTION AVERAGE / CONSOMMATION MOYENNE *

ENERGIA ELETTRICA ELECTRICAL ENERGY ENERGIE ELECTRIQUE	KW/h	10	20
ARIA AIR AIR	Nl/min	200	200
FRIGORIE FRIGORIES FRIGORIES	frig/h	9000	15000

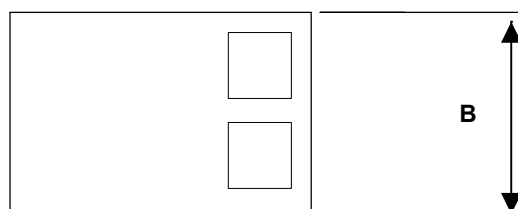
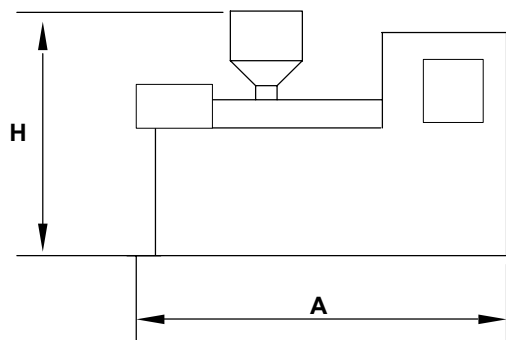
PESO / WEIGHT / POIDS *

NETTO TOTALE NET WEIGHT POIDS NET	Kg	9000	9100
---	----	------	------

DIMENSIONI / DIMENSIONS / DIMENSIONS *

A	mm	2800	3600
B	mm	2150	2150
H	mm	2500	2500

* Dati relativi alla macchina in configurazione standard
Data relevant to the machine with standard configuration
Données techniques concernant la machine selon la configuration standard



I dati di questa scheda tecnica possono subire delle variazioni senza preavviso
The data of this schedule may be changed without any notice
Les données de la fiche technique peuvent subir des variations sans avis

E = ESTRUSORE
= EXTRUDER
= ESTRUSOR

VP = VITE PISTONE
= SCREW-PISTON
= VIS PISTON